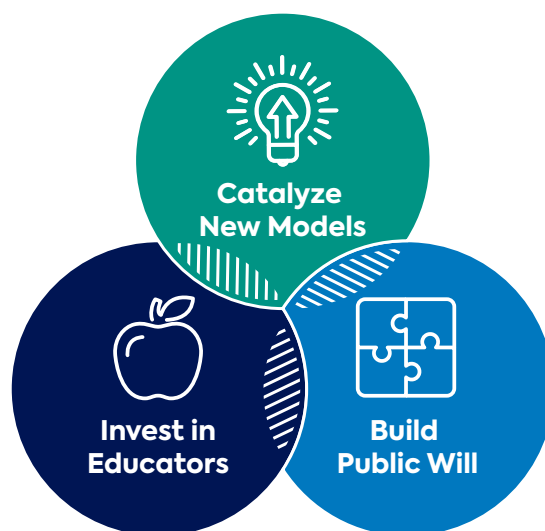


Education Partner DIRECTORY

SEPTEMBER 2023

The Barr Foundation's Education Program

focuses on the transformation of the public high school experience to advance excellence and equity for young people—especially for students of color and other systemically marginalized students—across New England. We pursue this goal through three interconnected strategies.



We catalyze new models

by supporting school and system leaders while they collaborate with their communities to envision excellence and equity in their school, to plan and prepare for how to get there, and to make transformative change.



We invest in educators

through supporting the development of a diverse, skilled, and effective workforce of teachers, school leaders, and system leaders who deliver high-quality instruction and bring new school models to life.



We build public will

by supporting partners who elevate the experiences and voices of students, parents, and educators to build awareness, demand, and the conditions that incentivize excellence and equity in schools.

▶ If you would like to get in touch with any fellow partners, please let a member of the Barr team know, or reach out to education@barrfoundation.org. We'd love to connect you!

Barr Foundation Education Partners



Catalyze New Models

Achieving the Dream
Agawam Public Schools
Area Cooperative Educational Services
Aurora Institute
Barnstable Public Schools
Berkshire Community College Foundation
Berkshire Hills Regional School District
Blackstone Academy Charter School
Boston Green Academy
Boston International Newcomers Academy
Capitol Region Education Council
Center on Reinventing Public Education
Central Falls School District
Chelsea Public Schools
College Bound Dorchester
Common Ground High School
Complete College America
Danbury Public Schools
Digital Ready
Duet
Fall River Public Schools
Franklin School District SAU 18
Thomas B. Fordham Institute
Gateway Regional School District
Grantmakers for Education
Great Oaks Charter School
Great Schools Partnership
Hale Reservation
Hartford Public Schools
Holyoke Public Schools
KnowledgeWorks Foundation
Kreiva Academy Public Charter School
Lawrence Public Schools
Lowell Public Schools
Manchester Public Schools
Map Education
Margarita Muñoz Academy
Milford Public Schools
Millbury Public Schools
Mohawk Trail Regional School District
New Hampshire Learning Initiative
Newport Public Schools
Next Generation Learning Challenges
Peabody School District
Portland Public Schools
Boston Prep
President and Fellows of Harvard College
Prospect Hill Academy Charter School
Roca
Salem Public Schools
Sheila C. Skip Nowell Leadership Academy
Springfield Empowerment Zone Partnership
Springfield Public Schools
Springpoint Schools
Stratford Public Schools
Taunton Public Schools
The Clayton Christensen Institute
For Disruptive Innovation
Transcend
University of Massachusetts
Veritas Preparatory Charter School
Waltham Public Schools
White Mountains Regional School District
Winooski School District



Invest in Educators

Educators for Excellence
Educators for Excellence—Connecticut
Gardner Public Schools
Generation Teach
Great Schools Partnership
He Is Me Institute
Holyoke Public Schools
Leading Now
Massachusetts Association of School Superintendents
Massachusetts Department of Elementary and Secondary Education
National Council on Teacher Quality
Relay Graduate School of Education
Springfield Empowerment Zone Partnership
Springpoint Schools
Teach for America—Connecticut
Teach for America—Massachusetts
Teach Plus Incorporated
Teach Western Mass
The Equity Institute
The Massachusetts Institute for a New Commonwealth
The Teacher Collaborative
The Teachers' Lounge
The Teachers' Lounge
TNTP
UnboundEd Learning Inc.
Wheelock Educational Policy Center

Barr Foundation Education Partners



Build Public Will

AdvocacyLabs
Boston Globe Media Partners
Boston Schools Fund
Campaign for Our Shared Future
Citizens for Juvenile Justice
Community Legal Aid
Connecticut Coalition for Achievement Now (ConnCAN)
EdNavigator
Education Reform Now
Educators for Excellence—Boston
FaithActs for Education
Georgetown University's Edunomics Lab
Great Schools Partnership
GreatSchools
Latinos for Education

Lawyers for Civil Rights
Massachusetts Advocates for Children
Massachusetts Business Alliance for Education
Massachusetts Charter Public School Association
Massachusetts Communities Action Network
National Parents Union
Nellie Mae Education Foundation
Our Turn
Parents Leading for Educational Equity
Rennie Center for Education Research and Policy
SchoolFacts Boston
The Education Trust
The Grade
uAspire
Union Capital Boston



Consulting Support Partners

Attuned Education Partners
Education Analytics
Matterlab
Organizational Services Inc.
Paul Schnaittacher
Teak Media + Communication
The Learning Agenda



Catalyze New Models

We catalyze new models by supporting school and system leaders while they collaborate with their communities to envision excellence and equity in their school, to plan and prepare for how to get there, and to make transformative change.

Achieving the Dream

LOCATION FOCUS New England

PARTNERSHIP FOCUS Core support for New England work to expand K–12 partnership services, launch a new Gateway to College program, and expand work with 11 Massachusetts community colleges aimed at improving outcomes and developing a sense of belonging for BIPOC students.

WEBSITE achievingthedream.org

Agawam Public Schools

STATE FOCUS Massachusetts

PARTNERSHIP FOCUS Planning for a reimagined high school experience as part of the Meeting the Moment cohort.

WEBSITE agawamed.org

Area Cooperative Educational Services

STATE FOCUS Connecticut

PARTNERSHIP FOCUS Supporting the systemic design and implementation of schoolwide structures to assist with the ACES at Chase school transformation from a 6–8 school to a 6–12 innovative STEAM school.

WEBSITE aces.org

Aurora Institute

LOCATION FOCUS National

PARTNERSHIP FOCUS General operating support to drive the transformation of education systems by informing the advancement of breakthrough policies and practices to ensure high-quality learning for all.

WEBSITE aurora-institute.org

Barnstable Public Schools

STATE FOCUS Massachusetts

PARTNERSHIP FOCUS Planning for a reimagined Barnstable High School experience as part of the Meeting the Moment cohort, and supporting the continued redesign of Barnstable Intermediate School.

WEBSITE barnstable.k12.ma.us

Berkshire Community College Foundation

STATE FOCUS Massachusetts

PARTNERSHIP FOCUS Continuing the design and early implementation of a reimagined high school experience at five Berkshire County high schools in alignment with the Portrait of a Graduate.

WEBSITE berk12.org/pog

Berkshire Hills Regional School District

STATE FOCUS Massachusetts

PARTNERSHIP FOCUS Supporting the continued redesign of Monument Mountain Regional High School.

WEBSITE bhrsd.org

Blackstone Academy Charter School

STATE FOCUS Rhode Island

PARTNERSHIP FOCUS Supporting Blackstone Academy Charter School as part of the sustainability phase of the Wider Learning Ecosystem cohort.

WEBSITE blackstoneacademy.org

Boston Green Academy

STATE FOCUS Massachusetts

PARTNERSHIP FOCUS Supporting the implementation of the Strategic Teaching and Learning Action Plan focused on implementing instructional vision and practices while engaging stakeholders in clarifying the portrait of a graduate.

WEBSITE bostongreenacademy.org

Boston International Newcomers Academy

STATE FOCUS Massachusetts

PARTNERSHIP FOCUS Deepening the school design and implementation plans at BINcA, including exploring a partnership with Internationals Network.

WEBSITE bincabps.org

Capitol Region Education Council

STATE FOCUS Connecticut

PARTNERSHIP FOCUS Planning for a reimagined Greater Hartford Academy of the Arts high school experience as part of the Meeting the Moment cohort.

WEBSITE crec.org

Center on Reinventing Public Education

STATE FOCUS New England

PARTNERSHIP FOCUS Conducting and coordinating continued research on the impact of COVID-19 on New England public high schools.

WEBSITE crpe.org/think-forward-new-england

Central Falls School District

STATE FOCUS Rhode Island

PARTNERSHIP FOCUS Supporting teacher capacity building and the development of an instructional coaching model.

WEBSITE cfschools.net

Chelsea Public Schools

STATE FOCUS Massachusetts

PARTNERSHIP FOCUS Continuing implementation and iteration of Chelsea Opportunity Academy—including work as part of the Beyond Engage New England initiative, and planning for a reimagined Chelsea High School experience as part of the Meeting the Moment cohort.

WEBSITE chelseaschools.com

College Bound Dorchester

STATE FOCUS Massachusetts

PARTNERSHIP FOCUS Core support for New England work focusing on empowering Core Influencers to become positive leaders in their communities.

WEBSITE uncornered.org

Common Ground High School

STATE FOCUS Connecticut

PARTNERSHIP FOCUS Supporting Common Ground High School as part of the sustainability phase of the Wider Learning Ecosystem cohort.

WEBSITE commongroundct.org

Complete College America

LOCATION FOCUS New England

PARTNERSHIP FOCUS Core support for New England work expanding pillar strategies.

WEBSITE completecollege.org

Danbury Public Schools

STATE FOCUS Connecticut

PARTNERSHIP FOCUS Continuing the design and early implementation of a reimagined high school experience in alignment with the Portrait of a Graduate.

WEBSITE danbury.k12.ct.us

Digital Ready

STATE FOCUS Massachusetts

PARTNERSHIP FOCUS Supporting the ongoing school transformation at CityLab Revere with a focus on the grade 10 experience, and supporting Digital Ready to create a communications plan for the launch of the STEMHub @ Roxbury in fall 2023.

WEBSITE digitalready.org citylabreve.com

Duet

STATE FOCUS Massachusetts

PARTNERSHIP FOCUS General operating support to assist adults in New England who have been historically excluded from participating in higher education due to systemic barriers receive an affordable and accelerated pathway to degree completion.

WEBSITE duet.org

Fall River Public Schools

STATE FOCUS Massachusetts

PARTNERSHIP FOCUS Supporting the ongoing development of Evolve Academy as part of the Beyond Engage New England initiative.

WEBSITE fallriverschools.org

Franklin School District SAU 18

STATE FOCUS New Hampshire

PARTNERSHIP FOCUS Continuing the design and early implementation of a reimagined high school experience in alignment with the Portrait of a Graduate.

WEBSITE sau18.org

Thomas B. Fordham Institute

LOCATION FOCUS National

PARTNERSHIP FOCUS Studying the impact of different high school math pathways.

WEBSITE fordhaminstitute.org

Gateway Regional School District

STATE FOCUS Massachusetts

PARTNERSHIP FOCUS Planning for a reimagined high school experience as part of the Meeting the Moment cohort.

WEBSITE grsd.org

Grantmakers for Education

LOCATION FOCUS National

PARTNERSHIP FOCUS Supporting the second season of the Future of Smart Podcast.

WEBSITE edfund.org

Great Oaks Charter School

STATE FOCUS Connecticut

PARTNERSHIP FOCUS Supporting the ongoing redesign of Great Oaks Charter School in Bridgeport.

WEBSITE greatoaksschool.org

Great Schools Partnership

STATE FOCUS Maine

PARTNERSHIP FOCUS Supporting Nokomis Regional High School as part of the sustainability phase of the Wider Learning Ecosystem cohort.

WEBSITE greatschoolspartnership.org

Hale Reservation

STATE FOCUS Massachusetts

PARTNERSHIP FOCUS Defining a sustainable programmatic and financial model for Intrepid Academy at Hale Education.

WEBSITE hale1918.org

Hartford Public Schools

STATE FOCUS Connecticut

PARTNERSHIP FOCUS Supporting district innovations efforts with iNet—a cohort of schools reimagining the design and delivery of school, ensuring that all efforts are aligned with students receiving rigorous, standards-based, and deeply engaging instruction that supports.

Supporting implementation of high school redesign plans as part of the Planning for Post-Secondary Success for All Students project.

WEBSITE hartfordschools.org

Holyoke Public Schools

STATE FOCUS Massachusetts

PARTNERSHIP FOCUS Supporting the ongoing development of Holyoke Opportunity Academy as part of the Beyond Engage New England initiative, and supporting ongoing work to transform Holyoke High School.

WEBSITE hps.holyoke.ma.us

KnowledgeWorks Foundation

LOCATION FOCUS National

PARTNERSHIP FOCUS Supporting the implementation of research to identify and examine high-performing high schools.

WEBSITE knowledgeworks.org

Kreiva Academy Public Charter School

STATE FOCUS New Hampshire

PARTNERSHIP FOCUS Supporting ongoing high school design and iteration.

WEBSITE kreiva.org

Lawrence Public Schools

STATE FOCUS Massachusetts

PARTNERSHIP FOCUS Supporting the redesign of the comprehensive pathway experience for all LHS students in alignment with the portrait of a graduate and instructional vision.

WEBSITE lawrence.k12.ma.us

Lowell Public Schools

STATE FOCUS Massachusetts

PARTNERSHIP FOCUS Continuing the design and early implementation of a reimagined high school experience in alignment with the Portrait of a Graduate.

WEBSITE lowell.k12.ma.us

Manchester Public Schools

STATE FOCUS Connecticut

PARTNERSHIP FOCUS Supporting Manchester High School as part of the sustainability phase of the Wider Learning Ecosystem cohort.

WEBSITE mpsp.org

Map Education

STATE FOCUS Massachusetts

PARTNERSHIP FOCUS Supporting planning for charter renewal.

WEBSITE themapacademy.org

Margarita Muñiz Academy

STATE FOCUS Massachusetts

PARTNERSHIP FOCUS Continuing the design and early implementation of a reimagined high school experience in alignment with the Portrait of a Graduate.

WEBSITE munizacademy.org

Milford Public Schools

STATE FOCUS Massachusetts

PARTNERSHIP FOCUS Planning for a reimagined high school experience as part of the Meeting the Moment cohort.

WEBSITE milfordpublicschools.com

Millbury Public Schools

STATE FOCUS Massachusetts

PARTNERSHIP FOCUS Planning for a reimagined high school experience as part of the Meeting the Moment cohort.

WEBSITE millburyschools.org

Mohawk Trail Regional School District

STATE FOCUS Massachusetts

PARTNERSHIP FOCUS Supporting the continued redesign of Mohawk Trail Regional School.

WEBSITE mtrsd.org

New Hampshire Learning Initiative

STATE FOCUS New Hampshire

PARTNERSHIP FOCUS Supporting New Hampshire districts as they redesign to support personalized career and college learning pathways for students.

WEBSITE nhlearninginitiative.org

Newport Public Schools

STATE FOCUS Rhode Island

PARTNERSHIP FOCUS Supporting ongoing implementation in the transformation of Rogers High School, with particular attention to deepening rigorous and purposeful learning experiences for students.

WEBSITE npsri.net

Next Generation Learning Challenges

LOCATION FOCUS New England

PARTNERSHIP FOCUS Supporting Next Generation Learning Challenges (NGLC) to plan and facilitate New England learning excursions to exemplary school models.

WEBSITE nextgenlearning.org

Peabody School District

STATE FOCUS Massachusetts

PARTNERSHIP FOCUS Supporting the redesign of the high school experience.

WEBSITE peabody.k12.ma.us

Portland Public Schools

STATE FOCUS Maine

PARTNERSHIP FOCUS Supporting the next phase of high school transformation as part of the Planning for Post-Secondary Success for All Students project.

WEBSITE portlandschools.org

Boston Prep

STATE FOCUS Massachusetts

PARTNERSHIP FOCUS Continuing the design and early implementation of a reimagined Boston Prep high school experience in alignment with the Portrait of a Graduate.

WEBSITE bostonprep.org

President and Fellows of Harvard College

LOCATION FOCUS National

PARTNERSHIP FOCUS Supporting the launch of the Institute for Success Planning.

WEBSITE harvard.edu

Prospect Hill Academy Charter School

STATE FOCUS Massachusetts

PARTNERSHIP FOCUS Building capacity for Prospect Hill's pedagogical transformation towards student-centered project-based instruction.

WEBSITE phacs.org

Roca

STATE FOCUS Massachusetts

PARTNERSHIP FOCUS Providing core support for Boston and western Massachusetts work to support disengaged 16–24 year-olds as they learn to address their own trauma and uncover their path to employment, further education, and independence.

WEBSITE rocainc.org

Salem Public Schools

STATE FOCUS Massachusetts

PARTNERSHIP FOCUS Supporting the redesign of Salem's high schools.

WEBSITE saalemk12.org

Sheila C. Skip Nowell Leadership Academy

STATE FOCUS Rhode Island

PARTNERSHIP FOCUS Supporting the ongoing development of Nowell Academy as part of the Beyond Engage New England initiative.

WEBSITE nowellacademy.org

Springfield Empowerment Zone Partnership

STATE FOCUS Massachusetts

PARTNERSHIP FOCUS Supporting the next phase of work for the redesign of High School of Commerce.

WEBSITE springfieldempowerment.org

Springfield Public Schools

STATE FOCUS Massachusetts

PARTNERSHIP FOCUS Continuing the design and early implementation of a reimagined high school experience in alignment with the Portrait of a Graduate.

WEBSITE springfieldpublicschools.com

Springpoint Schools

LOCATION FOCUS New England

PARTNERSHIP FOCUS Continuing to lead the technical assistance for the schools in the Engage New England cohort.

Supporting the planning and piloting of Transformative Learning Experiences (TLEs) to prepare to scale.

Building organizational capacity to scale School Observation Visits and to provide capacity-building support for Barr grantee school leaders.

Designing and hosting an inspirational study tour to support Meeting the Moment cohort grantees in dreaming about what might be possible for high school transformation.

WEBSITE springpointschools.org

Stratford Public Schools

STATE FOCUS Connecticut

PARTNERSHIP FOCUS Continuing the design and early implementation of a reimagined high school experience in alignment with the Portrait of a Graduate.

WEBSITE stratfordk12.org

Taunton Public Schools

STATE FOCUS Massachusetts

PARTNERSHIP FOCUS Planning for a reimagined high school experience as part of the Meeting the Moment cohort.

WEBSITE tauntonschools.org

The Clayton Christensen Institute For Disruptive Innovation

LOCATION FOCUS National

PARTNERSHIP FOCUS Supporting research on increasing students' social capital.

WEBSITE christenseninstitute.org

Transcend

LOCATION FOCUS National

PARTNERSHIP FOCUS Supporting the Canopy Project research and implementation, and continuing to build and share actionable knowledge to inform innovative school models.

WEBSITE transcendeducation.org

University of Massachusetts

STATE FOCUS Massachusetts

PARTNERSHIP FOCUS Evaluating the Commonwealth Collegiate Academy.

WEBSITE umass.edu

Veritas Preparatory Charter School

STATE FOCUS Massachusetts

PARTNERSHIP FOCUS Supporting high school design, iteration, and expansion to grades 9–12.

WEBSITE veritasprepma.org

Waltham Public Schools

STATE FOCUS Massachusetts

PARTNERSHIP FOCUS Supporting the continued evolution of the high school model and the rollout of ChangeMaker Academy.

WEBSITE walthampublicschools.org

White Mountains Regional School District

STATE FOCUS New Hampshire

PARTNERSHIP FOCUS Continuing implementation and iteration of the high school design.

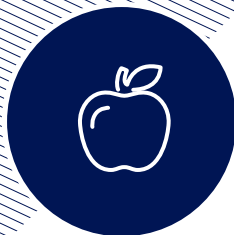
WEBSITE wmrhs.sau36.org

Winooski School District

STATE FOCUS Vermont

PARTNERSHIP FOCUS Supporting Winooski Middle High School as part of the sustainability phase of the Wider Learning Ecosystem cohort.

WEBSITE wsdschools.org



Invest in Educators

We invest in educators through supporting the development of a diverse, skilled, and effective workforce of teachers, school leaders, and system leaders who deliver high-quality instruction and bring new school models to life.

Educators for Excellence

LOCATION FOCUS National

PARTNERSHIP FOCUS Supporting general operations of the National office.

WEBSITE e4e.org

Educators for Excellence—Connecticut

STATE FOCUS Connecticut

PARTNERSHIP FOCUS Core support for E4E's Connecticut Chapter ensuring that teachers have a leading voice in the policies that impact their students and profession.

WEBSITE e4e.org/chapter/connecticut

Gardner Public Schools

STATE FOCUS Massachusetts

PARTNERSHIP FOCUS Supporting the implementation plans for local education agencies engaged in the Strengthening School Leadership cohort.

WEBSITE gardnerk12.org

Generation Teach

STATE FOCUS Massachusetts

PARTNERSHIP FOCUS Supporting Generation Teach's summer teaching fellowship and placement and support for alumni in New England.

WEBSITE generationteach.org

Great Schools Partnership

LOCATION FOCUS New England

PARTNERSHIP FOCUS Supporting GSP's ongoing facilitation of the Diversifying the Educator Workforce in New England initiative.

WEBSITE greatschoolspartnership.org

He Is Me Institute

LOCATION FOCUS New England

PARTNERSHIP FOCUS Supporting general operations as He Is Me Institute empowers Black men to obtain and retain careers in teaching.

WEBSITE heisme.org

Holyoke Public Schools

STATE FOCUS Massachusetts

PARTNERSHIP FOCUS Supporting the implementation plans for local education agencies engaged in the Strengthening School Leadership cohort.

WEBSITE hps.holyoke.ma.us

Leading Now

LOCATION FOCUS New England

PARTNERSHIP FOCUS Providing programming to superintendents in New England and supporting organizational development.

WEBSITE leadingnow.org

Massachusetts Association of School Superintendents

STATE FOCUS Massachusetts

PARTNERSHIP FOCUS Supporting M.A.S.S.'s Strategy for advancing Racial Equity, Diversity, and Inclusion, including the New Superintendents' Induction Program (NSIP).

WEBSITE massupt.org

Massachusetts Department of Elementary and Secondary Education

STATE FOCUS Massachusetts

PARTNERSHIP FOCUS Supporting the expansion of DESE's Influence 100 initiative.

WEBSITE doe.mass.edu

National Council on Teacher Quality

LOCATION FOCUS National

PARTNERSHIP FOCUS Promoting coherent, effective clinical training practices for teachers, and catalyzing interest in building robust teacher supply and demand datasets in New England and nationally.

WEBSITE nctq.org

Relay Graduate School of Education

LOCATION FOCUS New England

PARTNERSHIP FOCUS Building from the work of Relay's "Follow the Leader" series to identify and share leadership bright spots and to codify and share learnings from partnership in Holyoke (MA).

WEBSITE relay.edu

Springfield Empowerment Zone Partnership

STATE FOCUS Massachusetts

PARTNERSHIP FOCUS Supporting the implementation plans for local education agencies engaged in the Strengthening School Leadership cohort.

WEBSITE springfieldempowerment.org

Springpoint Schools

STATE FOCUS Massachusetts

PARTNERSHIP FOCUS Supporting Springpoint's implementation of one cohort of the Transformative Leaders of Massachusetts Fellowship.

WEBSITE springpointschools.org

Teach for America—Connecticut

STATE FOCUS Connecticut

PARTNERSHIP FOCUS Core support for TFA's Connecticut region as they find, develop, and support a diverse network of leaders, working together to end educational inequity.

WEBSITE teachforamerica.org/connecticut

Teach for America—Massachusetts

STATE FOCUS Massachusetts

PARTNERSHIP FOCUS Core support for TFA's Massachusetts region as they find, develop, and support a diverse network of leaders, working together to end educational inequity.

WEBSITE teachforamerica.org/massachusetts

Teach Plus Incorporated

LOCATION FOCUS New England

PARTNERSHIP FOCUS Supporting Teach Plus as they launch and develop the Inquiry Institute for the Massachusetts region and nationally.

WEBSITE teachplus.org

Teach Western Mass

STATE FOCUS Massachusetts

PARTNERSHIP FOCUS Supporting general operations as TWM finds, prepares, and supports a dedicated corps of teachers who reflect the lives of the students they serve, so they can pursue a sustainable career in the classroom.

WEBSITE teachwesternmass.com

The Equity Institute

STATE FOCUS Rhode Island

PARTNERSHIP FOCUS Supporting Re*Generation a network of BIPOC educators and co-conspirators to build authentic relationships with one another and advance education equity in their communities through monthly events, educational programming, and personal and professional development.

WEBSITE theequityinstitute.org

The Massachusetts Institute for a New Commonwealth

STATE FOCUS Massachusetts

PARTNERSHIP FOCUS Supporting research on educator diversity in Massachusetts.

WEBSITE massinc.org

The Teacher Collaborative

STATE FOCUS Massachusetts

PARTNERSHIP FOCUS Supporting general operations as The Teacher Collaborative activates educators' capacity to transform teaching and learning toward equity and excellence.

WEBSITE theteachercollaborative.org

The Teachers' Lounge

STATE FOCUS Massachusetts

PARTNERSHIP FOCUS Supporting planning for the Elevating Educators Coalition, co-led by The Teacher's Lounge, The Teacher Collaborative, and Teach for America—MA.

WEBSITE theteacherslounge.org

The Teachers' Lounge

STATE FOCUS Massachusetts

PARTNERSHIP FOCUS Providing general operating support as the Teachers' Lounge develops and implements innovative solutions for building more diverse, equitable, and inclusive learning and professional environments.

WEBSITE theteacherslounge.org

TNTP

LOCATION FOCUS New England

PARTNERSHIP FOCUS Supporting the implementation plans for local education agencies engaged in the Driving Towards Diversity Cohort.

WEBSITE tntp.org

UnboundEd Learning Inc.

STATE FOCUS Massachusetts

PARTNERSHIP FOCUS Supporting new and deepening work in up to six districts in Massachusetts aligned with research and evaluation strategy development.

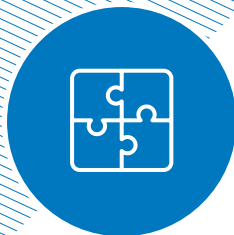
WEBSITE unbounded.org

Wheelock Educational Policy Center

LOCATION FOCUS New England

PARTNERSHIP FOCUS Core support to WEPC as they engage in research practice partnerships and disseminate critical findings that will advance education decision-makers ability to improve the quality and diversity of the educator workforce.

WEBSITE bu.edu/wheelock/research-action/centers-labs-institutes/wheelock-educational-policy-center/



Build Public Will

We build public will by supporting partners who elevate the experiences and voices of students, parents, and educators to build awareness, demand, and the conditions that incentivize excellence and equity in schools.

AdvocacyLabs

LOCATION FOCUS National

PARTNERSHIP FOCUS Supporting research to provide insight into effective education advocacy. An initiative of 50CAN and FutureEd.

WEBSITE future-ed.org/focus-areas/advocacylabs

Boston Globe Media Partners

STATE FOCUS Maine

PARTNERSHIP FOCUS Supporting “The Great Divide” reporting effort to examine issues of race, class, and inequality in K–12 education in Boston and statewide.

WEBSITE bostonglobe.com

Boston Schools Fund

STATE FOCUS Massachusetts

PARTNERSHIP FOCUS Supporting capacity-building for ACT Boston as well as general operating support as BSF works to provide opportunity and access to high-quality schools.

WEBSITE bostonschoolsfund.org

Campaign for Our Shared Future

LOCATION FOCUS New England

PARTNERSHIP FOCUS Core support for COSF’s efforts to advocate for and protect inclusive, high quality public education, and meaningful content in schools so that every student has an opportunity to succeed and thrive.

WEBSITE campaignsharedfuture.org

Citizens for Juvenile Justice

STATE FOCUS Massachusetts

PARTNERSHIP FOCUS General operating support as CfJJ works to reform and reimagine the juvenile justice and other youth serving systems in Massachusetts.

WEBSITE cfjj.org

Community Legal Aid

STATE FOCUS Massachusetts

PARTNERSHIP FOCUS Supporting education attorneys to provide outreach and advocacy to low-income students and families in Hampden County, with a focus on the communities of Holyoke and Springfield.

WEBSITE communitylegal.org

Connecticut Coalition for Achievement Now (ConnCAN)

STATE FOCUS Connecticut

PARTNERSHIP FOCUS Core support for ConnCAN’s work to improve outcomes for all Connecticut students by bringing together advocates, policymakers, parents and educators to give all kids access to great public schools.

WEBSITE 50can.org

EdNavigator

STATE FOCUS Massachusetts

PARTNERSHIP FOCUS Supporting EdNavigator’s efforts to help families gain access to the educational resources and services their children need and deserve.

WEBSITE ednavigator.org

Education Reform Now

STATE FOCUS Massachusetts

PARTNERSHIP FOCUS Core support for the Massachusetts chapter as it seeks to educate about, advocate for, and secure greater equity for the Commonwealth’s K–12 system.

WEBSITE edreformnow.org

Educators for Excellence—Boston

STATE FOCUS Massachusetts

PARTNERSHIP FOCUS Core support for the Boston Chapter’s efforts to ensure that teachers have a leading voice in the policies that impact their students and profession.

WEBSITE e4e.org/chapter/boston

FaithActs for Education

STATE FOCUS Connecticut

PARTNERSHIP FOCUS General operating support as FaithActs builds community power to get children in Bridgeport, Hartford, and New Haven the education they deserve.

WEBSITE faithactsedu.org

Georgetown University's Edunomics Lab

LOCATION FOCUS New England

PARTNERSHIP FOCUS Supporting the analysis and publicization of data on the potential magnitude of the fiscal cliff in New England districts.

WEBSITE edunomicslab.org

Great Schools Partnership

LOCATION FOCUS New England

PARTNERSHIP FOCUS Supporting The New England Secondary School Consortium (NESSC) Common Data Project.

WEBSITE greatschoolspartnership.org

GreatSchools

LOCATION FOCUS New England

PARTNERSHIP FOCUS Supporting efforts to help New England-based parent organizations utilize “Transforming High School” resources to drive change in their communities.

WEBSITE greatschools.org

Latinos for Education

LOCATION FOCUS New England

PARTNERSHIP FOCUS Core support for its New England operations to remove barriers to educational opportunity for students of color, particularly the barriers that uniquely impact Latino students.

WEBSITE latinosforeducation.org

Lawyers for Civil Rights

STATE FOCUS Massachusetts

PARTNERSHIP FOCUS Supporting LCR's work to diversify and democratize access to career vocational technical education (CVTE) schools in Massachusetts.

WEBSITE lawyersforcivilrights.org

Massachusetts Advocates for Children

STATE FOCUS Massachusetts

PARTNERSHIP FOCUS General operating support as MAC works to remove barriers to educational and life opportunities for children and youth who face inequities, and/or discrimination because of their economic status, disability, race, ethnicity/culture, immigration status, English Learner status, and/or traumatic life experiences.

WEBSITE massadvocates.org

Massachusetts Business Alliance for Education

LOCATION FOCUS National

PARTNERSHIP FOCUS General operating support as MBAE fosters a network of business leaders who are committed to ensuring every student, regardless of their zip code, has access to a high-quality education that prepares them for college, career, and citizenship.

WEBSITE mbae.org

Massachusetts Charter Public School Association

STATE FOCUS Massachusetts

PARTNERSHIP FOCUS General operating support as MCPSA works to create and protect the conditions that will enable the charter public school sector to thrive, and advance the larger goal of ensuring all Massachusetts children and families have equitable access to high-quality schools

WEBSITE masscharterschools.org

Massachusetts Communities Action Network

STATE FOCUS Massachusetts

PARTNERSHIP FOCUS Supporting continued advocacy for equitable access to high-quality vocational technical education in Massachusetts.

WEBSITE mcan.us

National Parents Union

STATE FOCUS Massachusetts

PARTNERSHIP FOCUS Core support for NPU-MA's parent-led work to advocate for policies and initiatives that support families and promote educational equity.

WEBSITE nationalparentsunion.org

Nellie Mae Education Foundation

LOCATION FOCUS New England

PARTNERSHIP FOCUS Providing technical assistance and capacity building support for the cohort of Elementary and Secondary School Emergency Relief (ESSER) grantees.

WEBSITE nmefoundation.org

Our Turn

LOCATION FOCUS New England

PARTNERSHIP FOCUS Bolstering Our Turn's efforts to support youth organizers in CT and NH and to develop report on youth engagement in ESSER fund use decisions.

WEBSITE itsourturn.org

Parents Leading for Educational Equity

STATE FOCUS Rhode Island

PARTNERSHIP FOCUS General operating support as PLEE builds demand for high-quality public school education for every child of color in Rhode Island, and strives to ensure that parents & caregivers have a voice in policy decisions at the local and state level.

WEBSITE pleeri.org

Rennie Center for Education Research and Policy

STATE FOCUS Massachusetts

PARTNERSHIP FOCUS Supporting the Condition of Education which seeks to build a more coherent vision for public education that can guide shared efforts and put every child in Massachusetts on a path to college, careers, and life success.

WEBSITE renniecenter.org

SchoolFacts Boston

STATE FOCUS Massachusetts

PARTNERSHIP FOCUS Core support as SchoolFacts Boston brings together Boston families to improve education for all students.

WEBSITE schoolfactsboston.org

The Education Trust

STATE FOCUS Massachusetts

PARTNERSHIP FOCUS Supporting public opinion polling and dissemination on education in the state of Massachusetts, as well as core support for Ed Trust's operations in the Commonwealth.

WEBSITE edtrust.org

The Grade

LOCATION FOCUS New England

PARTNERSHIP FOCUS Supporting independent analysis of media coverage of education news, with a focus on New England news.

WEBSITE the-grade.org

uAspire

STATE FOCUS Massachusetts

PARTNERSHIP FOCUS Core support for uAspire's efforts to improve the economic mobility of Massachusetts students by removing financial barriers to postsecondary education.

WEBSITE uaspire.org

Union Capital Boston

STATE FOCUS Massachusetts

PARTNERSHIP FOCUS Supporting work focused on education, through member programming and leadership development.

WEBSITE unioncapitalboston.org



Consulting Support Partners

Attuned Education Partners

LOCATION FOCUS New England

PARTNERSHIP FOCUS Continuing to provide custom COVID recovery system supports to help Barr partner districts leverage ESSER funds for long-term transformation.

Providing systems-level strategic support and coaching for 7 grantee communities, and fact packs and training for the Meeting the Moment cohort. Designing and facilitating a 1-day convening for Barr partners in the Strengthening School Leadership cohort to share key learnings from their implementation journeys and to discuss potential next steps for their work.

WEBSITE attunedpartners.com

Education Analytics

LOCATION FOCUS New England

PARTNERSHIP FOCUS Continuing work on the student outcomes tracking project across the schools in the Catalyze New Models portfolio.

WEBSITE edanalytics.org

Matterlab

LOCATION FOCUS New England

PARTNERSHIP FOCUS Designing and facilitating a two-day, in-person communications intensive with up to 12 Catalyze New Models grantees.

Helping the Barr Education team develop a strategic communications plan.

WEBSITE matterlab.org

Organizational Services Inc.

LOCATION FOCUS New England

PARTNERSHIP FOCUS Providing logistical and other planning services related to upcoming Barr grantee cohort in-person meetings.

WEBSITE osimeetings.com

Paul Schnaittacher

LOCATION FOCUS New England

PARTNERSHIP FOCUS Photographing Catalyze New Models grantee schools and their students in school settings and at in-person convenings.

EMAIL photogman@charter.net

Teak Media + Communication

LOCATION FOCUS New England

PARTNERSHIP FOCUS Serving as the Barr Education Program's communications agent, providing consulting and other related services.

WEBSITE teakmedia.com

The Learning Agenda

LOCATION FOCUS New England

PARTNERSHIP FOCUS Providing continued management of Learning Communities for Catalyze New Models grantees.

WEBSITE agenda4learning.com